

# Cheiron School 2013

## Kyoto Excursion

Date: September 27, 2013 (Friday)

### Schedule

08:20 Meeting point: Bus Parking Area

08:30 Dep. SPring-8

↓ (via Sanyo & Chugoku Expressway)

10 min. rest-stop on the way to Kyoto

↓ (via Meishin Expressway)

11:00 English-speaking guides will get on the bus.

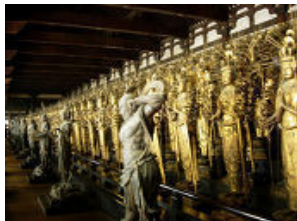
11:30 Arr. The SODOH Higashiyama (Lunch)

<http://www.thesodoh.com/en/>

Enjoy Italian dishes made with fresh local ingredients in a private residence.

12:40 Dep. The Sodoh Higashiyama

13:00 Arr. Sanjusangen-do <http://www.japan-guide.com/e/e3900.html>



The original **Sanjusangen-do** was built in 1164 at the request of the retired emperor Goshirakawa. The temple burned to the ground in 1249 but faithful copy was constructed in 1266. The temple's name refers to the 33(*sanju-san*) bays between the pillars of this long narrow building that houses 1001 statues of the 1000-armed Kannon (the Buddhist goddess of mercy). Visitors seem to keen to spot resemblances between friends or family members and any of the hundreds of images.

13:50 Dep. Sanjusangen-do

14:20 Arr. Kinkaku-ji <http://www.shokoku-ji.jp/flash/flash.html>



The famed **Golden Temple** is one of Japan's best known sights. The original building was constructed in 1397 as a retirement villa for Shogun Ashikaga Yoshimitsu. His son converted it into a temple. In 1950 a young monk consummated his obsession with the temple by burning it into the ground. The monk's story was fictionalized in Mishima Yukio's *The Golden Pavilion*. In 1955 a full reconstruction was completed that exactly followed the original design, but the gold-foil covering was extended to the lower floor.

15:20 Dep. Kinkaku-ji

15:45 Arr. Shijo-Karasuma area

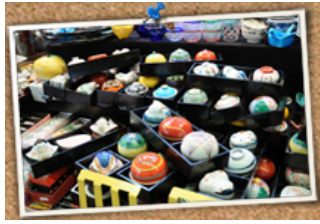
Get out of the bus and walk to Daimaru Department Store.

16:00~17:50 Free time in Nishiki Market (Supper and Shopping)

<http://www.kyoto-nishiki.or.jp/english/>

Nishiki Market is called "the kitchen of Kyoto". Along with the side of narrow street, 126 shops and stalls sell Japanese traditional foods, ingredients and other novel items.





- 18:00 Meet at Daimaru Department Store
- 18:15 Dep. Shijo-Karasuma area  
↓ (via Meishin & Chugoku Expressway)
- 10 min. rest-stop on the way back  
↓ (via Sanyo Expressway)
- 21:00 Arr. SPring-8